

UNIT, DIRECT SUPPORT, AND GENERAL SUPPORT MAINTENANCE  
REPAIR PARTS AND SPECIAL TOOLS LIST  
TRUCK, 5-TON, 6X6, M809 SERIES TRUCKS (DIESEL)

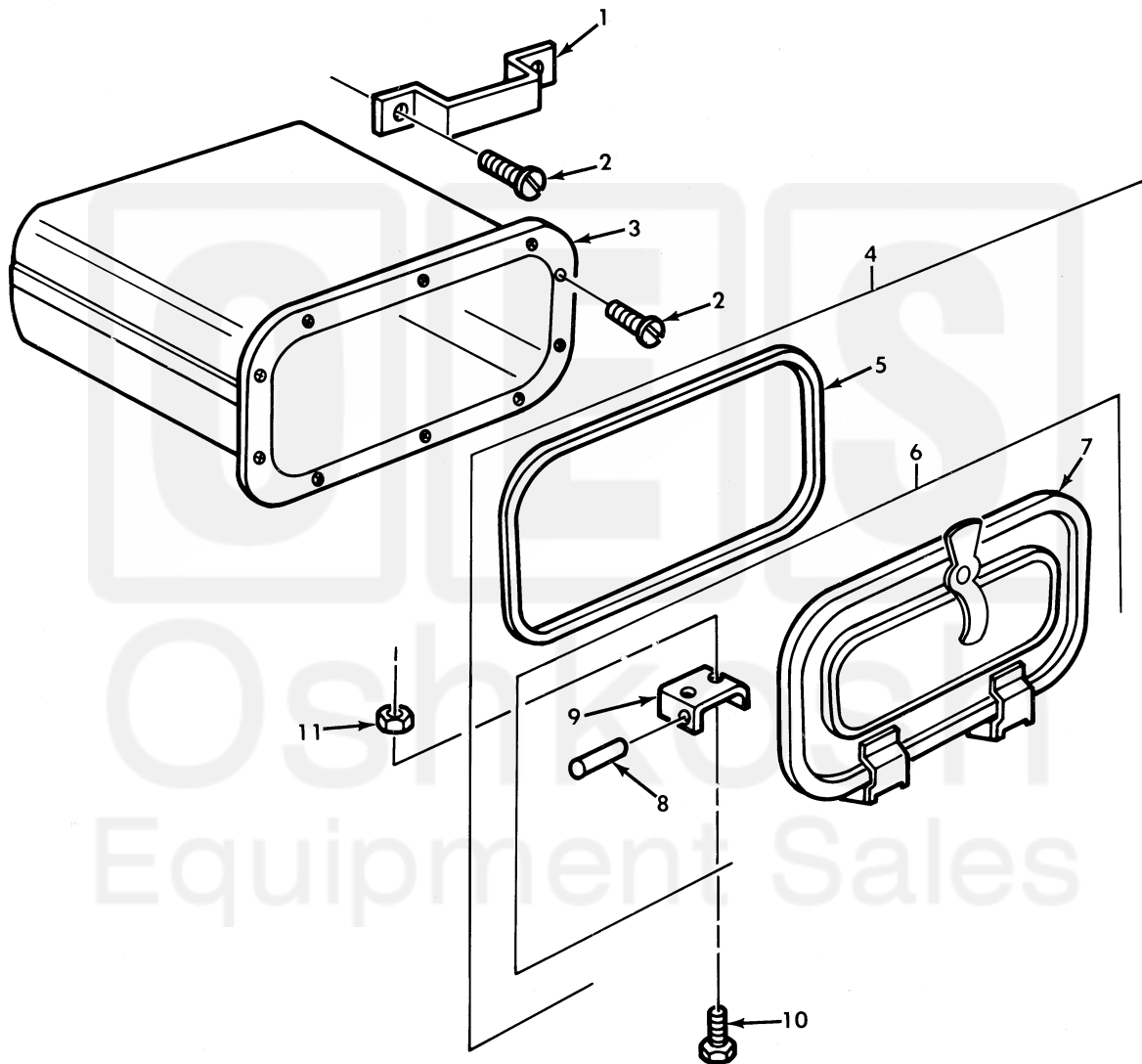


Figure 268. Map Compartment, Door Assembly, and Mounting Hardware.

(1) ITEM NO	(2) SMR CODE	(3) NSN	(4) CAGEC	(5) PART NUMBER	(6) DESCRIPTION AND USABLE ON CODE (UOC)	(7) QTY
					GROUP 1808 STOWAGE RACKS,BOXES, STRAPS,CARRYING CASES,CABLE REELS, AND HOSE REELS	
					FIG. 268 MAP COMPARTMENT,DOOR ASSEMBLY,AND MOUNTING HARDWARE	
1	PAOZZ	5340-00-469-8411	19207	7397851	STRAP,RETAINING.....	1
2	PAOZZ	5305-00-855-0957	96906	MS24629-46	SCREW,TAPPING.....	12
3	PAOZZ	2540-00-459-3194	19207	7397850	BOX,MAP COMPARTMENT.....	1
4	PAOOO	2540-00-737-3340	19207	7373340	DOOR,GLOVE COMPARTM.....	1
5	PAOZZ	5330-00-693-0611	19207	7373339	.SEAL,NONMETALLIC ST.....	1
6	PAOZZ	5340-01-206-8462	19207	10871805	.DOOR ASSEMBLY.....	1
7	PAOZZ	5342-01-215-7422	19207	7397976	..DOOR,ACCESS.....	1
8	PAOZZ	5320-01-310-4625	21450	104063	..RIVET,SOLID.....	2
9	PAOZZ	5340-01-215-5782	19207	7397970	..HINGE,DOOR.....	2
10	PAOZZ	5305-00-989-7434	96906	MS35207-263	SCREW,MACHINE.....	4
11	PAOZZ	5310-00-877-5797	96906	MS21044N3	NUT,SELF-LOCKING,HE.....	4

END OF FIGURE

